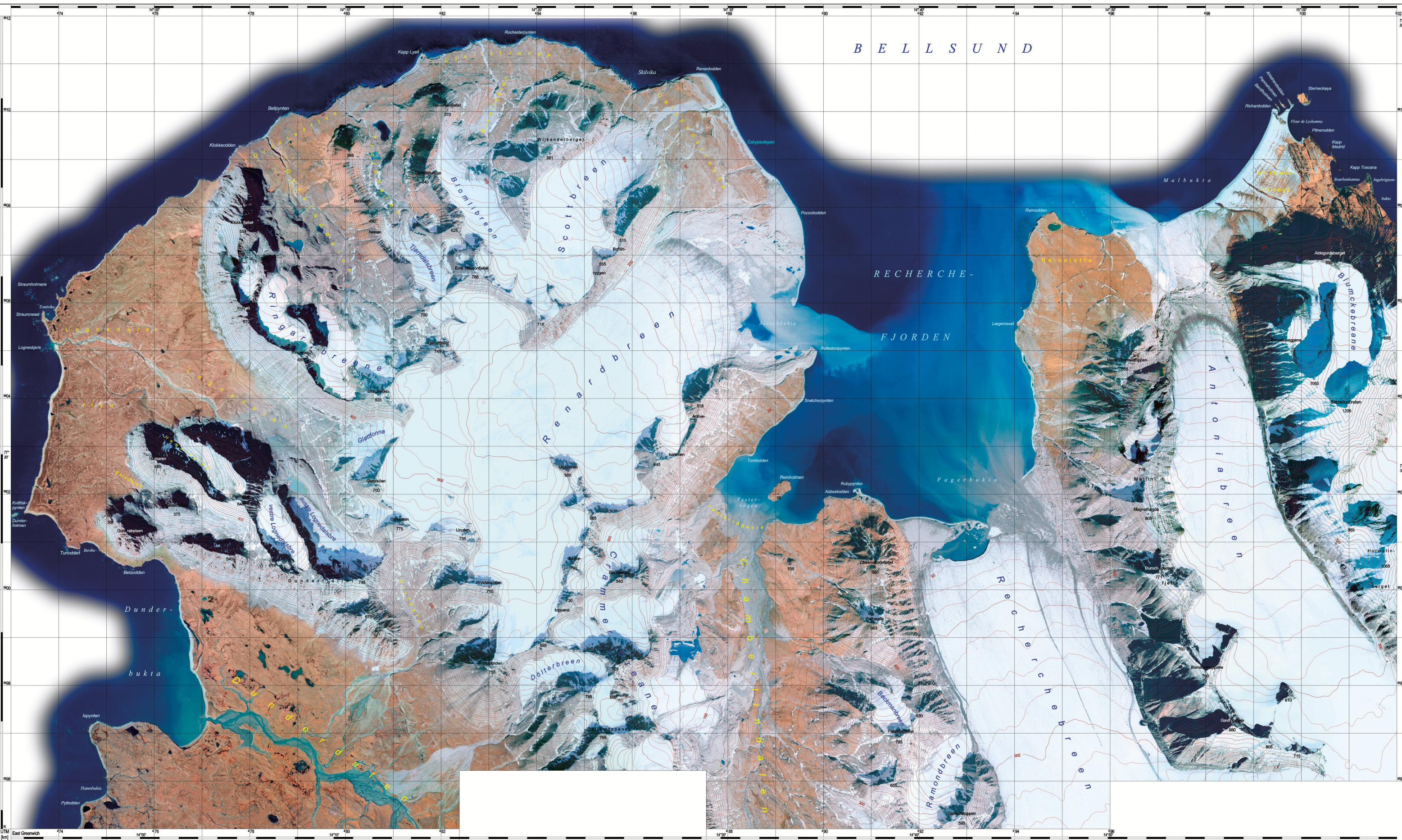
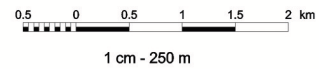


# NW PART OF WEDEL JARLSBERG LAND (Spitsbergen, Svalbard, Norway)



Cartographic projection: Universal Transverse Mercator  
 Coordinates: one kilometre UTM grid, Zone 33, central meridian 15 E  
 Ellipsoid: WGS 84  
 Datum: mean see level obtained from measurements of GPS receiver



Department of Geomorphology  
 Faculty of Earth Sciences and Spatial Management  
 Maria Curie-Skłodowska University, Lublin  
 Graphic elaboration: dr Piotr Zagórski

Zagórski P., 2005. NW part of Wedel Jarlsberg Land  
 (Spitsbergen, Svalbard, Norway).  
 (Eds.) K. Pękala, H.F.Aas. Orthophotomap,  
 scale 1:25000, Lublin.